

# BITUMINOUS GEOMEMBRANE "BGM"



**BMI**

**TERANAP**

[www.bmigroup.com](http://www.bmigroup.com)

# SIPLAST, THE PIONEER OF BGM

**BMI Siplast is the first geomembrane manufacturer. We started the production in 1974 in Mondoubleau, France.**



We have a fully dedicated production line for bituminous geomembranes at our factory in Mondoubleau. Our Research and Development department is working hard to ensure the highest quality and to sustain the best properties for our geomembranes over time.

Our knowledge and expertise, developed over the last 46 years around the world, allow us to bring the best technical support to our partners. We provide tailored solutions, adapted to any requirements or specific requests.

Our objective is to succeed together. We are always learning from the different sites we are working on. Our mindset is based on achieving a win-win outcome with all the stakeholders of the project.

We know civil engineering is very specific and unique, that's why our team is fully committed to help you find the solutions you need. We manage large-scale civil engineering jobs, and the high stakes and challenges they are faced with.





# THE TERANAP SOLUTION AT A GLANCE

The BMI Siplast elastomeric bitumen membranes combine the advantages of traditional materials like bituminous binders with the advantages of modern materials, in particular polymers and geotextiles.

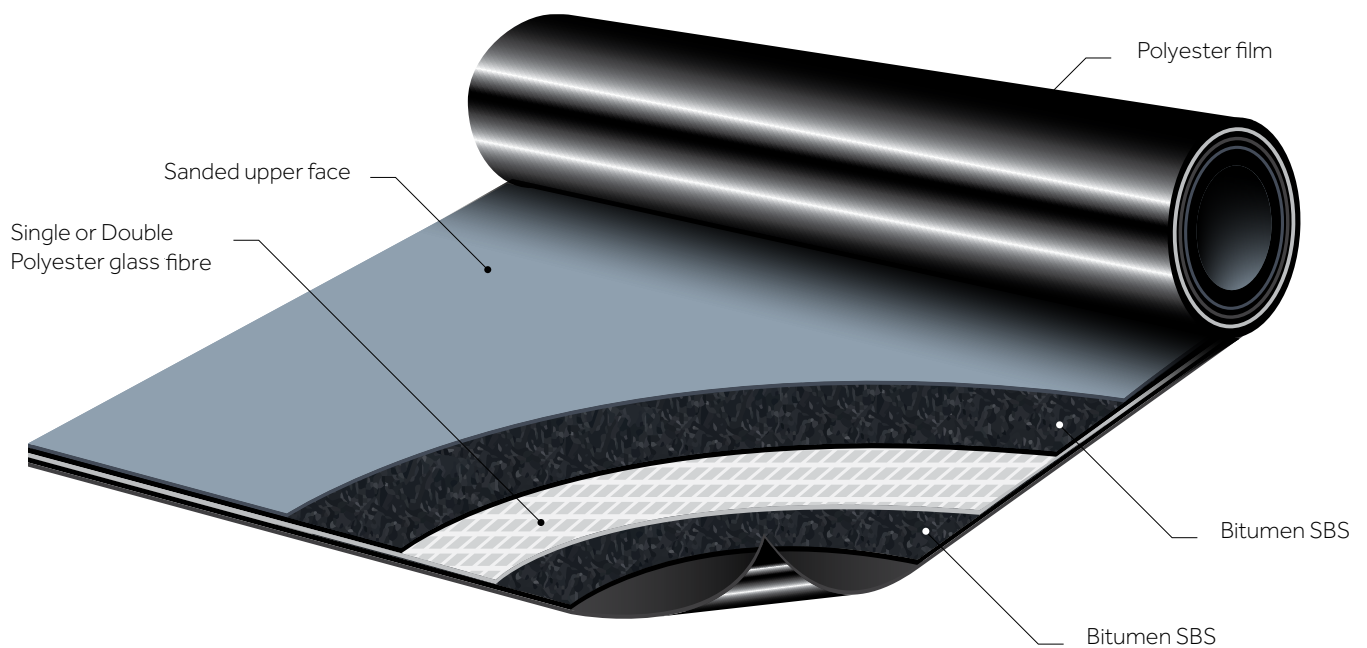
**TERANAP** is a geomembrane manufactured from high quality SBS elastomeric bitumen with a silica sand-coated surface.

## **TERANAP TP**

(331, 431, 531 and 631) is reinforced with long fibre non-woven geotextile and glass fibre fleece.

## **TERANAP EXPERT**

(300, 400, 500 and 600) has a stabilised composite reinforcement.





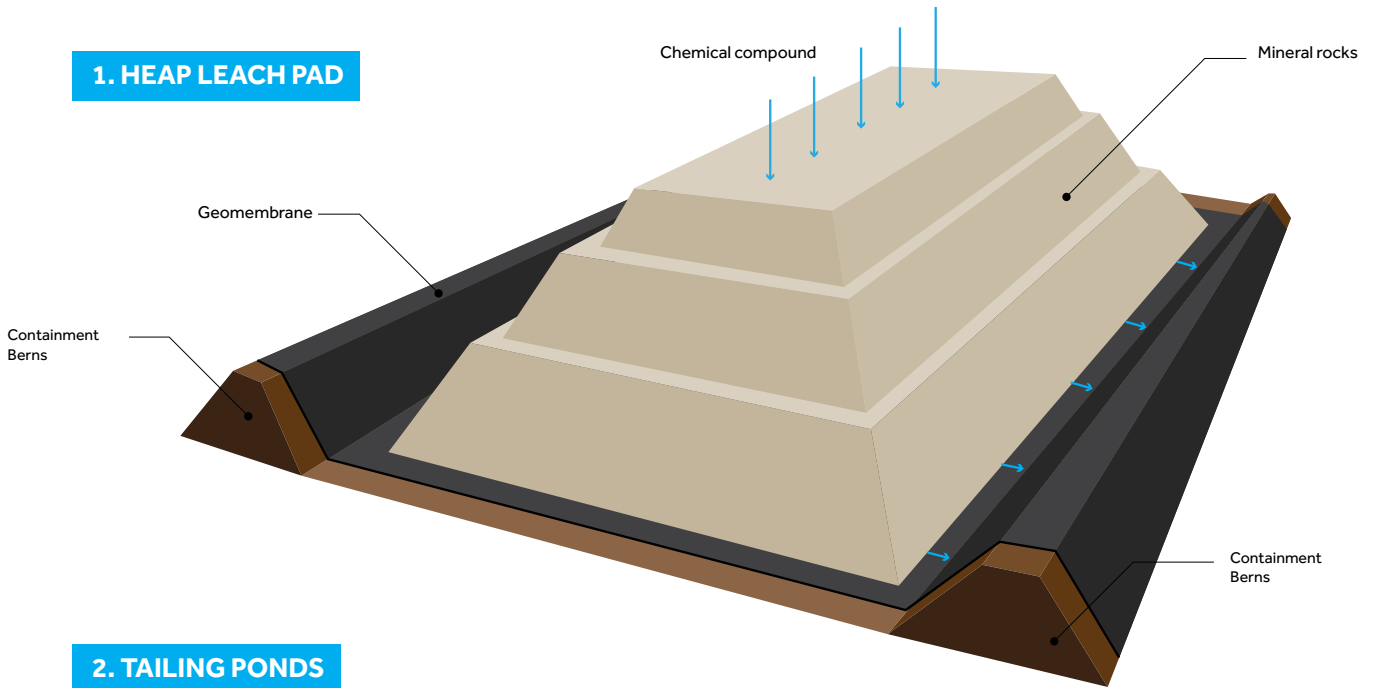
# APPLICATIONS

Our Teranap BGM ranges are perfectly adapted to protect the mining environment. For heap leach pad, as well as for tailing pond projects, we can adapt Teranap to the design, height, geometry and constraints of your project.

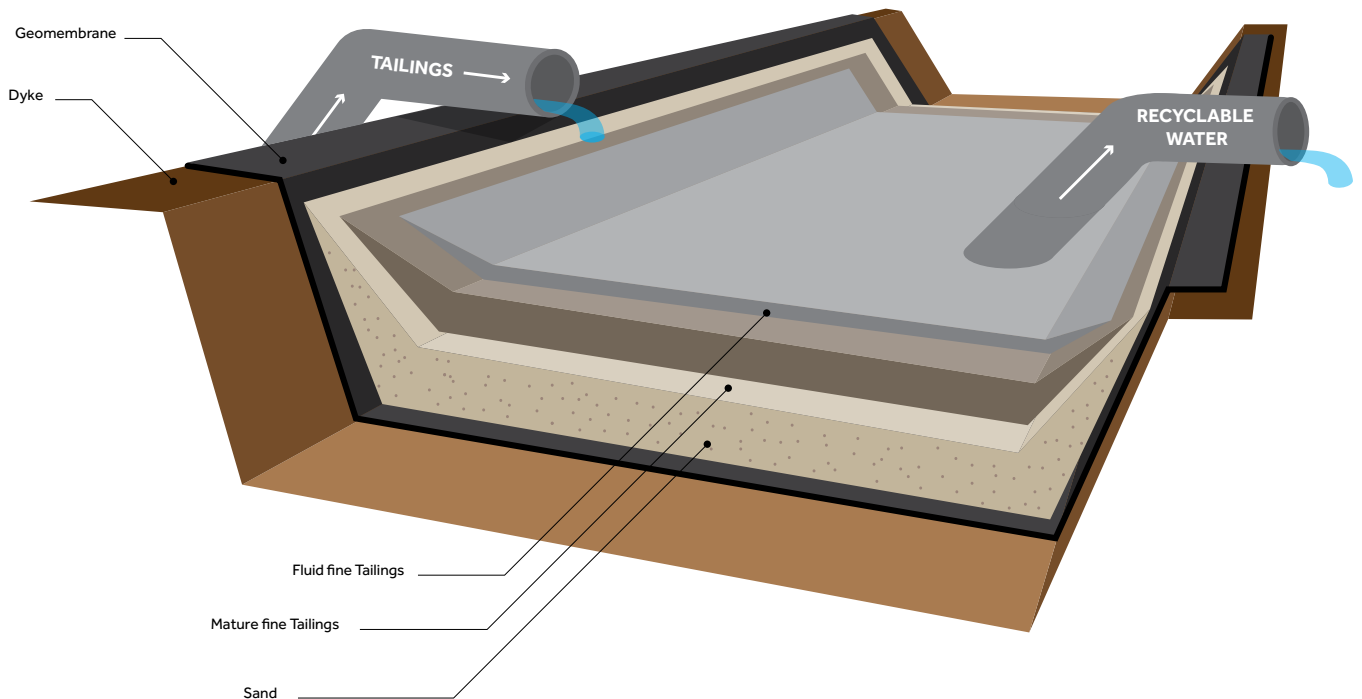
## APPLICATIONS

Mining waste and landfills:

### 1. HEAP LEACH PAD



### 2. TAILING PONDS

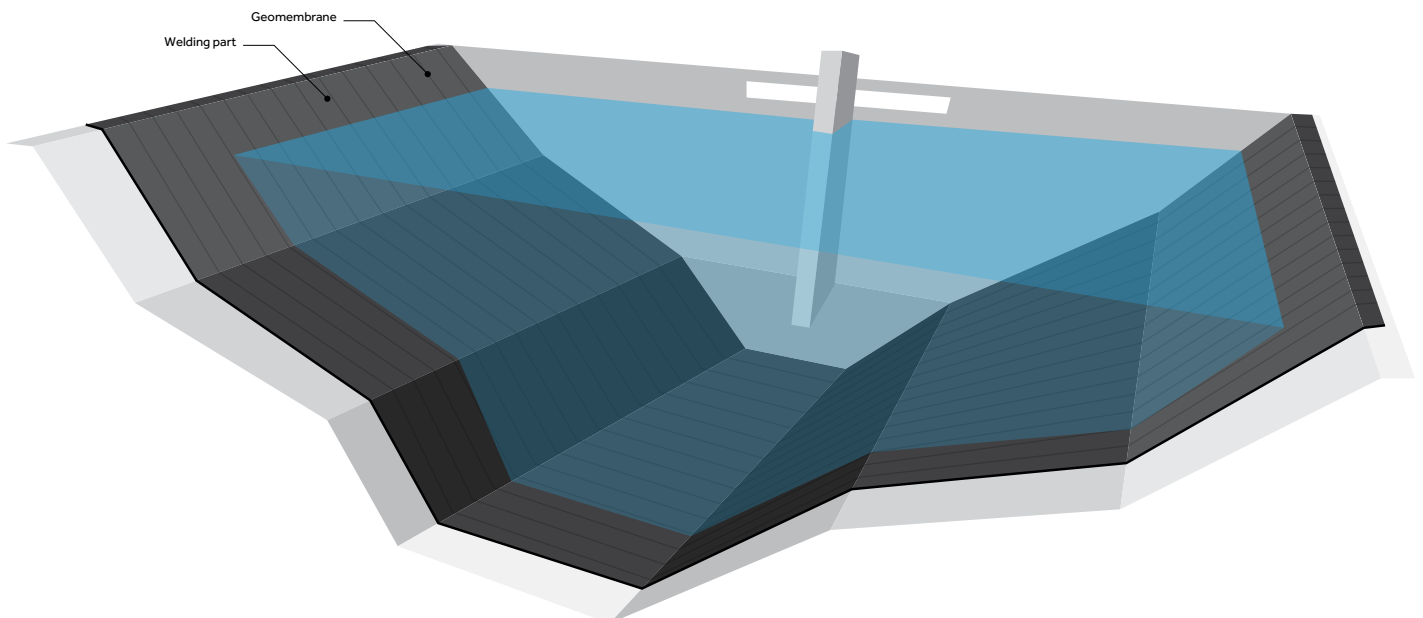
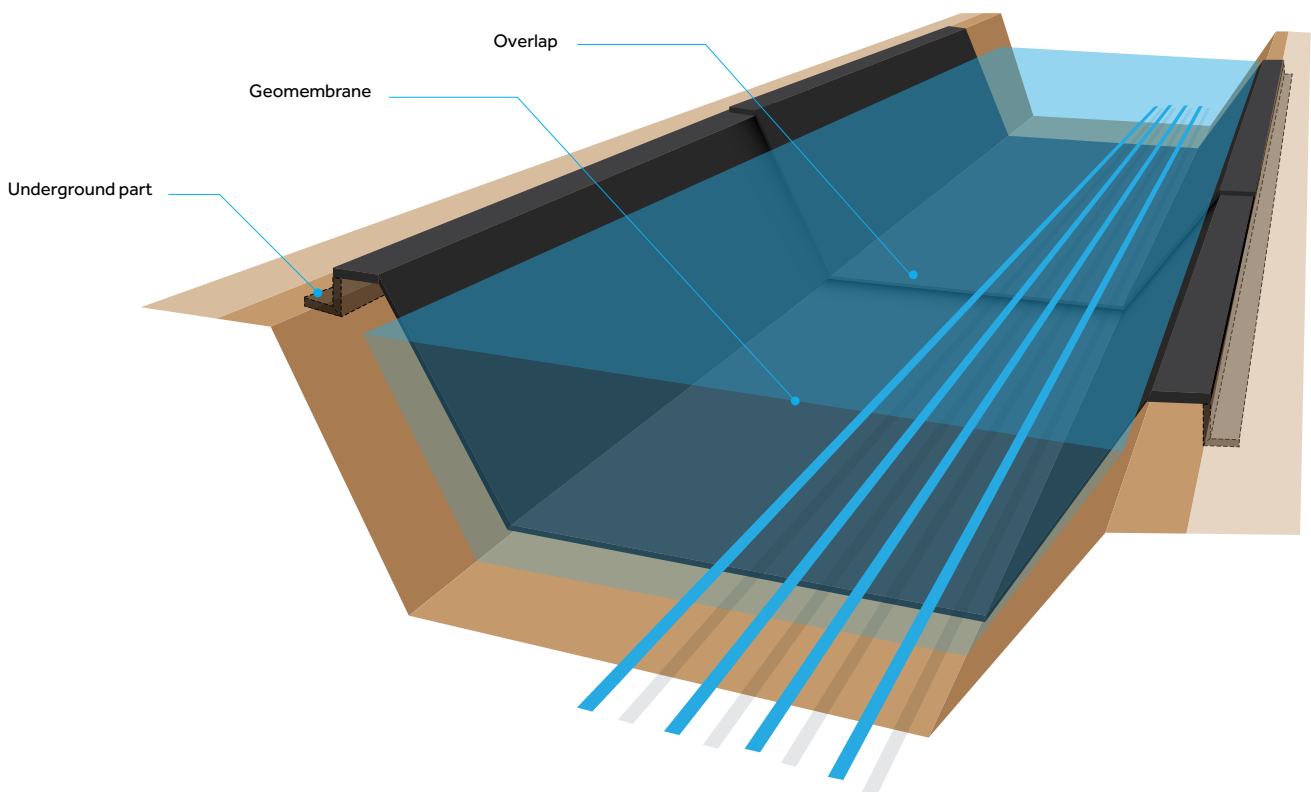


# APPLICATIONS

Water is too valuable to lose. Our Teranap BGM ranges prevent it. In irrigation canals, as well as in dams and reservoirs, Teranap is the ultimate barrier against water leakages.

## Hydraulic projects:

- Irrigation canals
- Hydroelectric and hydraulic dams
- Industrial reservoirs
- Gold mines
- Mineral Ore storage



# SERVICES

We are by your side from the beginning until the end of your project. We ensure that you get the solution you need and ensure the perfect installation on site. >

## DESIGN AND TECHNICAL SPECIFICATIONS



## TAILOR-MADE SOLUTIONS



## ON SITE ASSISTANCE AND TRAINING





# INNOVATION

**Teranap Control heralds a revolution. Now, it is possible to control the entire seams of a BGM.**

## Teranap Seam Control

- Innovative and exclusive technology, under the Siplast patent
- Leak Detection System

## Key benefits

- Easy and precise leak detection
- Non-destructive control



## WELDING QUALITY CONTROL

- Leak detection by tracer gas and a lightweight control tool providing a very reliable process to precisely determine any leaks.
- Leak detection instant alarm sounds with gas tracer meter reading and warning flashing light.
- Thanks to the sensitivity of the sniffer canes used along the weld, the portable device detects if there is any presence of tracer gas molecules and locates the precise location of the leak.
- It can be confirmed with a water / soap solution.



# PROJECT REFERENCES

DAM AL Boqataa - LEBANON



**ARGENTINE CERRO NEGRO**



**TASMANIA Roseberry Mning**



# PROJECT REFERENCES

MOROCCO - El Hallasa



PERU - Antamina - Gold Mine



Balama - Mozambique - Mining



Tasmania - Australia - Tailings Dam





## **CONTACT US!**

For more information on Teranap and how it can help your project,  
please email us at:

[contact.international@bmigroup.com](mailto:contact.international@bmigroup.com)